

Deep Application Transaction Management



Compuware APM Production Edition provides deep application insight into the experience and behavior of all users, from any device, for all transactions, 24/7, end to end, down to the line of code for production operators and business owners. This makes triage easier and more accurate, and information passed to colleagues is far more valuable.

HOW COMPUWARE APM PRODUCTION EDITION WORKS

Compuware APM Production Edition targets a series of stakeholders beginning with production operators and managers, business users, performance experts, system architects and development, for the resolution and prevention process.

For production operators, it may at first look similar to the traditional monitoring tools they are familiar with – dashboards will look the same, alerts are processed the same way and triage will proceed in the same way. But looking deeper, more layers of infrastructure are correlated, more data elements, like logs, are integrated, detail is exact, not averages, triage is easier and more accurate, and information passed to colleagues is far more valuable.



Smart, Automatic Application Monitoring provides out-of-the-box detection and monitoring of applications. Built-in Smart Baseline automatically detects unusual application behavior with self-learning, next-generation baselining algorithms.

Data capture, when an incident occurs, is automatic and can be automatically populated into the incident tracking system of choice. And the data provided to troubleshooters and/or development is no longer subject to interpretation and guesswork – it's the PurePath™ transaction detail.

This highlights the power of a single integrated system versus disparate tools. In addition, Compuware APM Production Edition automates a number of manual tasks associated with traditional monitoring systems. Sensor placement is automatic and self-learning and auto-adapts to any application change, virtually eliminating the need for manual configuration and maintenance.

Lightweight, zero-configuration agents and collectors are centrally managed from an easy-to-use server console, and default instrumentation levels are pre-set to reduce impact of over-instrumentation.

Packaged with a number of plug-ins for enterprise management systems and their event dashboards, incident tracking systems, server and OS monitors and standard dashboard, Compuware APM Production Edition is easy to incorporate into any existing production environment and quick to add value in a variety of ways for a variety of stakeholders.

COMPUWARE APM PRODUCTION EDITION BENEFITS

ACCELERATE YOUR BUSINESS

Operations groups are adjusting to rapid application releases, frequent infrastructure changes and increased interaction with other stakeholders. Compuware APM Production Edition helps Operations keep pace with business by providing visibility and insight into how performance impacts key business metrics such as conversions and revenue.

ASSURE USER EXPERIENCE

revenue, loyalty and brand depend on sub-second response times. Assure optimal end-user experience at all times with Compuware APM

Production Edition and Compuware APM uEM. All users and all transactions are monitored 24/7 to provide full visibility and actionable intelligence.

ADVANCE APPLICATION MONITORING

Compuware APM Production Edition advances application monitoring through transaction-level focus, multi-layer correlation and increased automation.

INCREASE AVAILABILITY, REDUCE MTTR

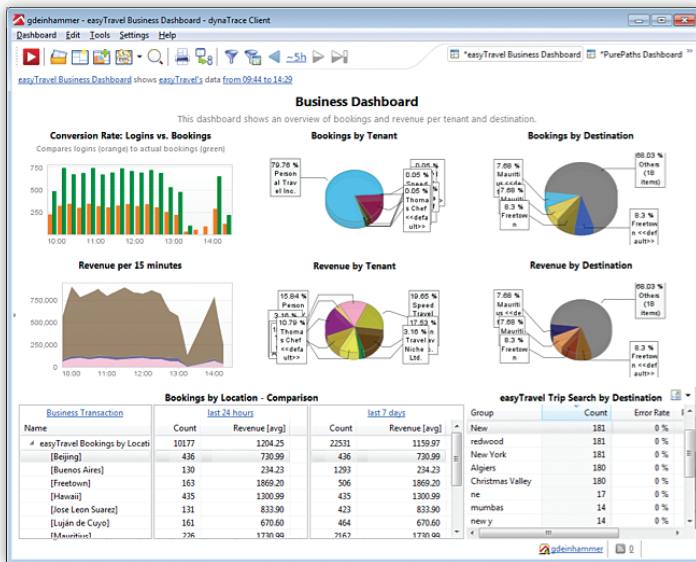
Compuware APM Production Edition smoothens release cycles, assures more predictable scalability and cuts MTTR by 90 percent or more.

OPTIMIZED FOR CLOUD, VIRTUALIZED AND DISTRIBUTED

Compuware APM Production Edition has been designed, optimized and proven in today's modern application environments including private/public/hybrid clouds, distributed, n-tier applications, service-based architectures, ESBs, third-party frameworks and off-shore applications.

PROVIDE BUSINESS AND APPLICATION INSIGHT

Business process improvement and increasing business value are two of the most important IT initiatives. Compuware APM Production Edition enables operators to do both at once. Empowering teamwork with development and QA, while providing real-time business insight to business owners are easily accomplished with out-of-the-box business and application dashboards and reports.



Get deep insight into business activity by capturing and using information from all tiers, end to end.

Compuware Corporation, the technology performance company, makes technology make a difference by providing software, experts and best practices to ensure technology works well and delivers value. Compuware solutions make the world's most important technologies perform at their best for leading organizations worldwide, including 46 of the top 50 Fortune 500 companies and 12 of the top 20 most visited U.S. web sites. Learn more at: compuware.com.

Compuware Corporation World Headquarters • One Campus Martius • Detroit, MI 48226-5099

© 2013 Compuware Corporation

Compuware products and services listed within are trademarks or registered trademarks of Compuware Corporation. Oracle and Java are registered trademarks of Oracle and/or its affiliates. Other names may be trademarks of their respective owners.

9.9.13 21982mmc

EASY TO INTEGRATE, EASY TO DEPLOY

Typical resource-intensive production implementations, measured in months, are no longer practical. Compuware APM Production Editions' zero-configuration and Smart technologies make it easy to integrate, easy to deploy and very easy to manage — up and running in minutes, zero-configuration, out-of-the-box dashboards and reports — even in cloud environments.

COMPUWARE APM PRODUCTION EDITION CAPABILITIES

- Obtain real-user insight into user satisfaction, user behavior and rapid problem resolution with Compuware APM user Experience Management (uEM).
- Monitor 100 percent of the business transactions, 24/7, through all of the tiers in your application infrastructure.
- Immediately pinpoint any performance problems that may impact application performance and user satisfaction.
- view your runtime application topology and dependencies complete with transaction and service details via Transaction Flow and uML Sequence Diagrams.
- Start fast with zero Configuration, zero Deployment and Smart technology, including:
 - Smart Workflow
 - Smart Monitoring
 - Smart Detection
 - Smart Baselineing
- Tune and scale and applications more predictably in complex cloud, virtualized and distributed application environments.
- Provides analytics for state-of-the-art “Big Data” technologies such as Cassandra.

ABOUT COMPUWARE APM

Compuware APM is the leader in a new generation of application performance management. Unlike traditional APM solutions that are heavy, difficult and reactive, Compuware APM is light, smart and proactive. Compuware APM is built to manage the complexity of today's most challenging modern applications including mobile, cloud, Big Data and SOA. Compuware APM optimizes and monitors tens of thousands of applications for more than 4,000 customers, large and small, around the globe. Through the lens of end-user experience, our customers enjoy faster performance, proactive problem resolution, accelerated time-to-market and reduced application management costs through smarter analytics, advanced APM automation and a unique performance lifecycle foundation. Compuware is recognized as a leader in the “Magic Quadrant for Application Performance Monitoring” report.

